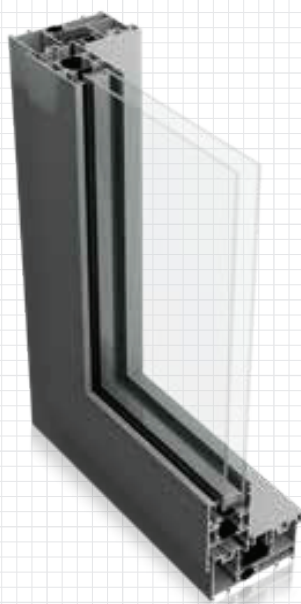


Aluminium BSC94 Inline Sliding Door System



Modern, versatile and customisable, the BSC94 Inline Sliding Door combines high performance with contemporary design to provide a reliable aluminium door system for almost any architectural project. Manufactured to the highest UK standards, this multi-configuration system can achieve thermal U-Values of 1.7W/m²K (triple glazed) and sightlines of as little as 45mm.

In addition to mono, dual and triple rail options, a comprehensive range of colours and anodised finishes is available for the system. The BSC94 also features an anti bi-metal polyamide strip to allow for varying expansion rates, ensuring the future integrity of your design.

DESIGN FEATURES

- › Accepts 20mm–31mm double glazing
- › Max 400kg panel weight
- › Anti bi-metal strip
- › Certified to PAS 24 and SBD

OPTIONS

- › Slimmer sightline of 45mm available
- › Multiple sliding configurations
- › Mono, dual or triple rail options
- › Available in single or dual colour polyester powder coating, texture and anodised finishes
- › Range of hardware and security features

SPECIFICATION DATABASE

APDD5 - 10/24 - V1.0



Aluminium BSC94 Inline Sliding Door System

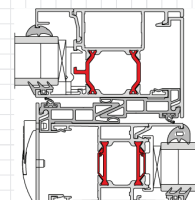
SPECIFICATIONS

	BSC94	BSC94 SLIM
PERFORMANCE AND ACCREDITATIONS		
U-Value (Double Glazing) (Ug = 1.0 W/m²K) (mono rail)	1.6 W/m²K	x
U-Value (Triple Glazing) (Ug = 0.7 W/m²K) (mono rail)	1.4 W/m²K	x
U-Value (Double Glazing) (Ug = 1.0 W/m²K) (dual Rail)	1.7 W/m²K	1.7 W/m²K
U-Value (Triple Glazing) (Ug = 0.7 W/m²K) (dual Rail)	1.5 W/m²K	1.5 W/m²K
BRE Green Guide Rating	C Rated	C Rated
Air Permeability	Class 4 (600 Pa)	Class 4 (600 Pa)
Water Tightness	Class 7a (300 Pa)	Class 7a (300 Pa)
Wind Resistance	C3 (1200 Pa)	C3 (1200 Pa)
Acoustic Performance	Rw (C _{tr}) 36 (-1;-3) dB**	-
Security	PAS 24 & SBD	x
SYSTEM		
Depth	94mm-155mm	94mm-155mm
CONFIGURATIONS		
Opening	Inline Sliding	Inline Sliding
Mono Rail	✓	x
Dual Rail	✓	✓
Tri Rail	✓	✓
SIZE AND WEIGHT LIMITS		
Max Frame Height	3000mm	3000mm
Max Vent Width	2000mm	2000mm
Max Frame Height With Security Features	2600mm	x
Max Vent Weight	400kg	400kg
GLAZING		
Glazing Options	Internal	Internal
Glazing Thickness	20mm-31mm	20mm-31mm
SYSTEM FEATURES		
Single Colour	✓	✓
Dual Colour	✓	✓
Textured Finish	✓	✓
Anodised Finish	✓	✓
Multi-Point Locking	✓	✓
Sightlines (Interlock)	85mm	45mm
Sightlines (Cill)	115.5mm	115.5mm
Sightlines (Head)	115.5mm	115.5mm
Sightlines (Jamb)	115.5mm	115.5mm

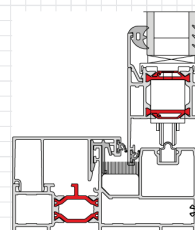
CAD CROSS SECTIONS AND THERMAL PROFILE

Additional details are available on request.

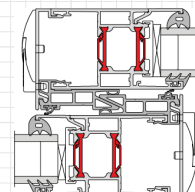
BSC94 Mono Rail – Interlock



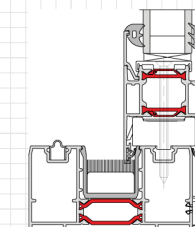
BSC94 Mono Rail – Cill



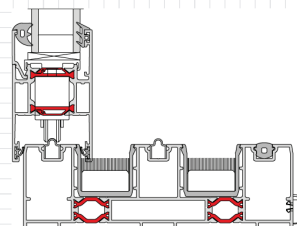
BSC94 Dual Rail/Tri Rail – Standard Interlock



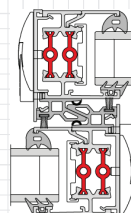
BSC94 Dual Rail – Cill



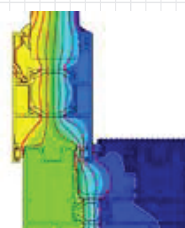
BSC94 Tri Rail – Cill



BSC94 Dual Rail/Tri Rail – Standard Slimline Interlock

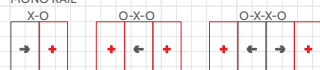


BSC94 Thermal Profile

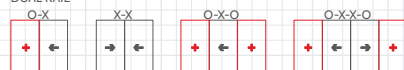


CONFIGURATIONS

MONO RAIL



DUAL RAIL



TRI RAIL



KEY

